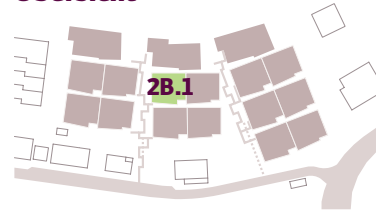


Obergeschoss

1 Vorplatz	BF: 1.7 m ²
2 Kochen	BF: 9.3 m ²
3 Essen	BF: 19.2 m ²
4 Wohnen	BF: 30.6 m ²
A Technik	BF: 7.4 m ²
B Weinkeller	BF: 7.1 m ²
C Reduit	BF: 2.8 m ²
D WC	BF: 2.2 m ²
E Terrasse	BF: 27.0 m ²

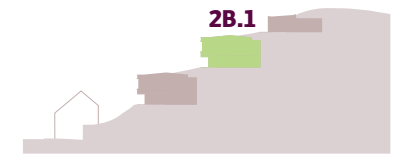
Übersicht



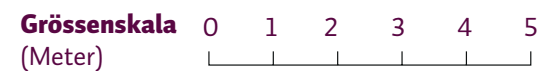
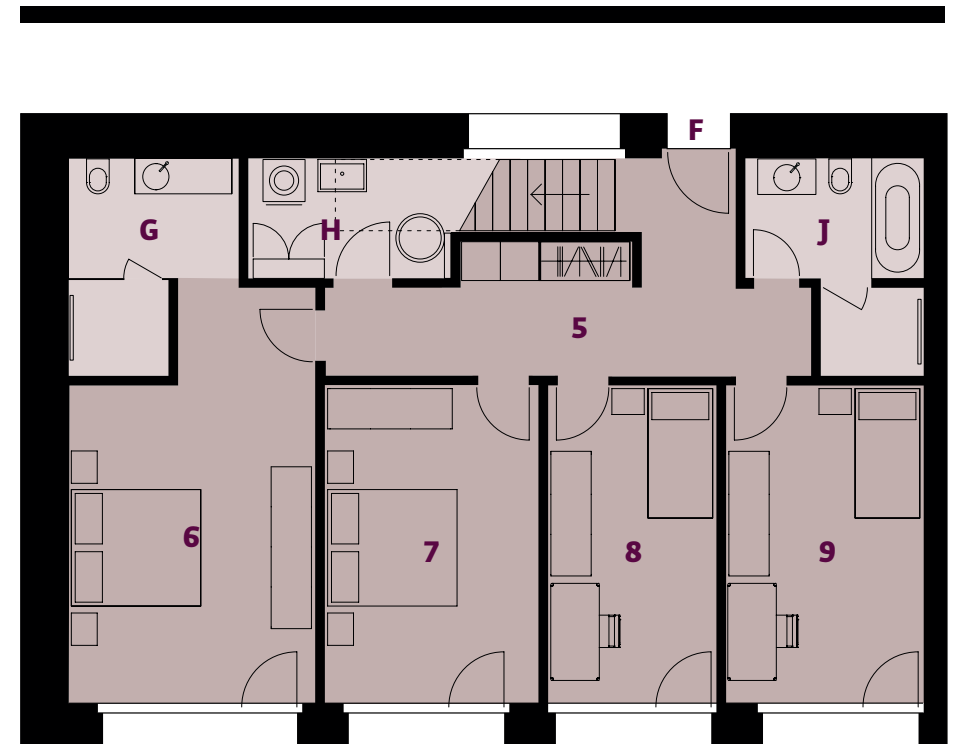
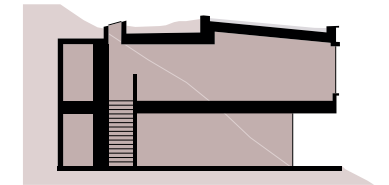
Sockelgeschoss

5 Entrée/Gang	BF: 16.4 m ²
6 Zimmer 1	BF: 22.1 m ²
7 Zimmer 2	BF: 16.2 m ²
8 Zimmer 3	BF: 12.8 m ²
9 Zimmer 4	BF: 15.0 m ²
F Zugang Lift/Treppenhaus	
G WC/Dusche	BF: 7.2 m ²
H Waschen/Technik	BF: 5.7 m ²
J Bad	BF: 7.3 m ²

Querschnitt



Querschnitt



BF (Bruttofläche)